



Levana
REALTY

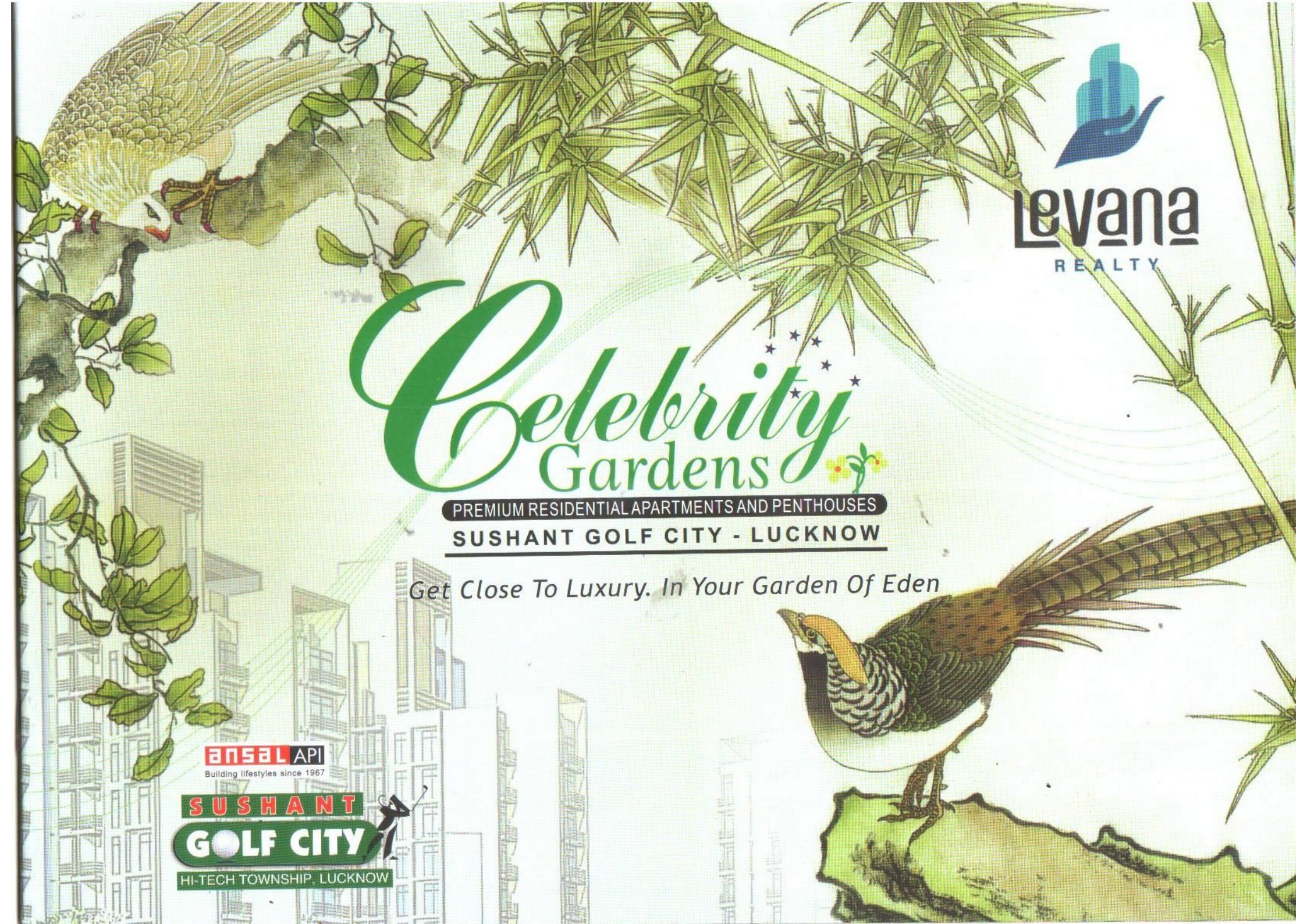
Celebrity Gardens

PREMIUM RESIDENTIAL APARTMENTS AND PENTHOUSES
SUSHANT GOLF CITY - LUCKNOW

Get Close To Luxury. In Your Garden Of Eden

ANSAL API
Building lifestyles since 1967

SUSHANT
GOLF CITY
HI-TECH TOWNSHIP, LUCKNOW





R. R. Group of Companies is combined venture of the business firm of Tirath Housing and Pee Kay Builders Pvt. Ltd. With rich experience and background of construction activity of Directors / Promoters, the firm has taken up various projects of construction of Residential and Commercial Complexes in Lucknow.

The Group Companies are one of the pioneers in the field of construction in the city of Lucknow and are fast changing the skyline of Lucknow with their projects.

Their sole belief is to provide ultramodern and aesthetically designed Housing and Commercial Complexes at reasonable cost.

SUSHANT

GOLF CITY

HI-TECH TOWNSHIP, LUCKNOW



Your Home In One of

The Most Celebrated Township

Welcome to Sushant Golf City, Lucknow. A Hi-Tech township sprawling across 2,000 acres extendable upto 5,000 acres (approx.). A world-class International Championship Golf Course surrounds residential and commercial areas, making life on the greens a reality. Luxury villas, designer landscaping, state-of-the-art infrastructure, excellent entertainment and healthcare facilities, lush greens... everything here is specially designed to excel even under the most discerning eye.



The grand entrance to Sushant Golf City from Amar Shahid Path

Lifestyle amenities

- Community Centre etc.
- Commercial Complex
- Post Office / Bank / ATM



Rich facilities

A Club House with

- Ultra-modern gym
- Swimming pool
- Multi-cuisine restaurants

Classy interiors

- Spacious living room & bedrooms
- Private balconies
- Modern kitchen
- Branded fitments
- Modern interiors
- Power backup for essential services
- Security with video phone
- Water purifier in the kitchen



Celebrity Gardens

Your ideal gateway



Celebrity Gardens is a super luxurious group housing with 2/3/4 bedrooms apartments and penthouses. Unmatched and unparalleled in sheer class and luxury with seamlessly woven natural vegetation, roadways, topography, water bodies and other top-notch facilities. With all the worldly convenience close by such as an 18 hole international golf course, world class shopping mall, a Medicity with super speciality hospital, a tennis academy, schools, post office and commercial centre - just to name a few.



Site Plan For Celebrity Gardens, Lucknow



- LEGEND**
- 1. RESIDENTIAL BLOCK
 - 2. CLUBHOUSE
 - 3. SWIMMING POOL
 - 4. BADMINTON COURTS
 - 5. GAMES AREA
 - 6. WATERBODY
 - 7. PAVILION

LOCKNOWGROUP HOUSING
12 DECEMBER 2007

NORTH

2 Bedrooms
AREA 1270 Sqft.

2 Bedrooms
AREA 1295 Sqft.

*Ground Floor
Plan 1*

3 Bedrooms+Study
AREA 1995 Sqft.



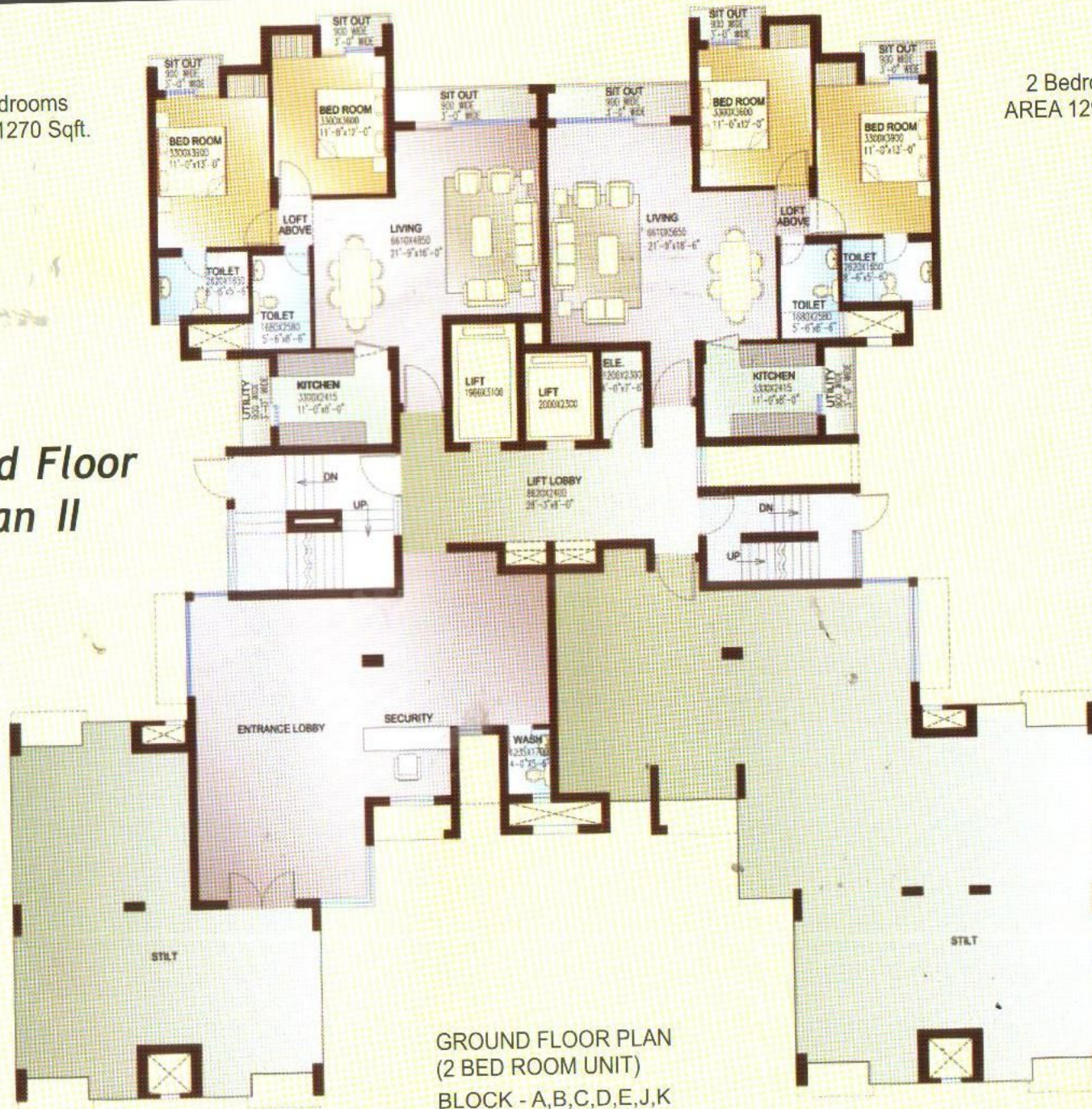
GROUND FLOOR PLAN
(3BED+STUDY & 2BED ROOM UNIT)
BLOCK - A,B,C,D,E,J,K

DRG. NO.
01

2 Bedrooms
AREA 1270 Sqft.

2 Bedrooms
AREA 1295 Sqft.

Ground Floor Plan II



GROUND FLOOR PLAN
(2 BED ROOM UNIT)
BLOCK - A,B,C,D,E,J,K

DRG. NO.
02

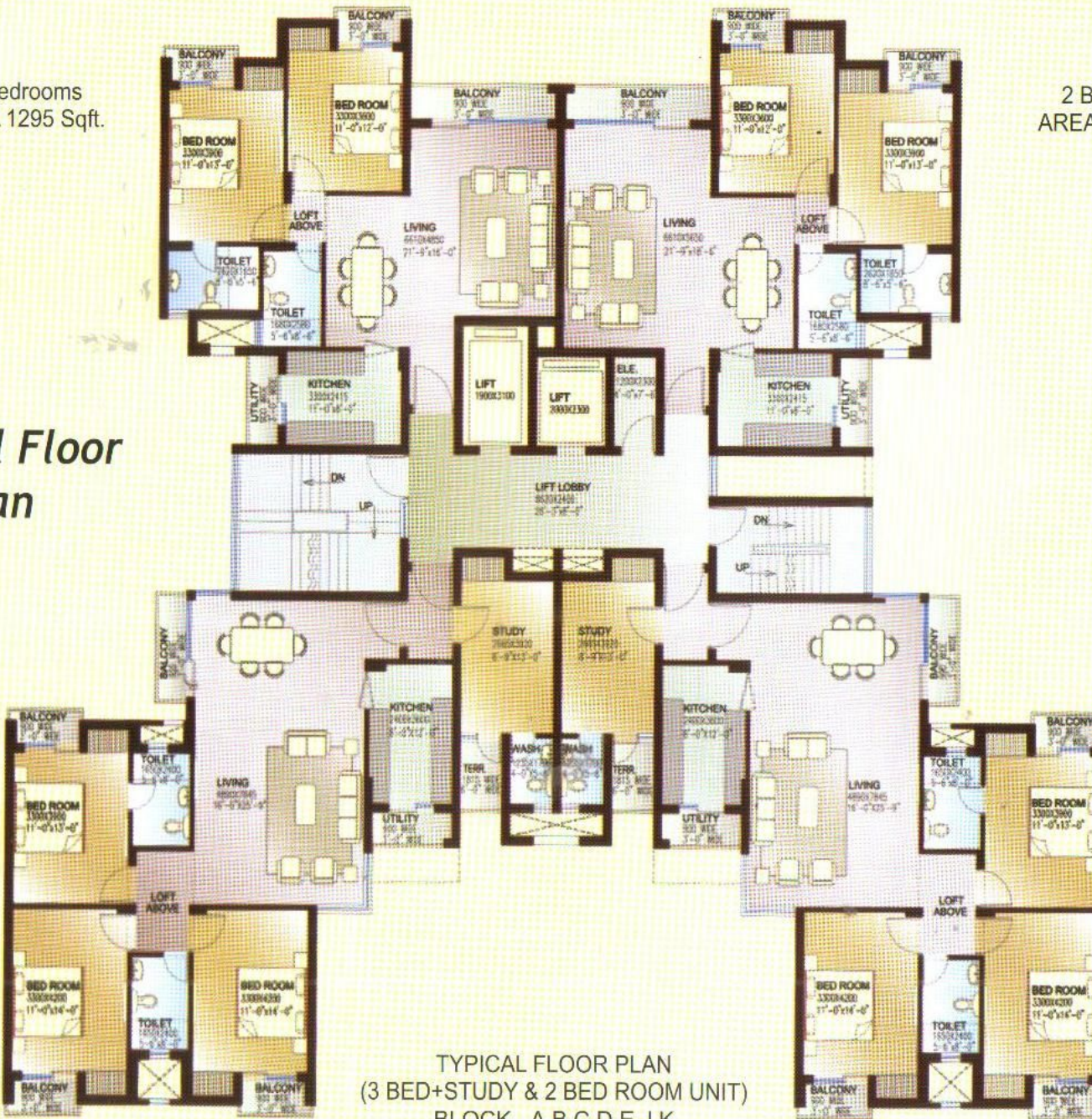
2 Bedrooms
AREA 1295 Sqft.

2 Bedrooms
AREA 1325 Sqft.

Typical Floor Plan

3 Bedrooms+Study
AREA 2015 Sqft.

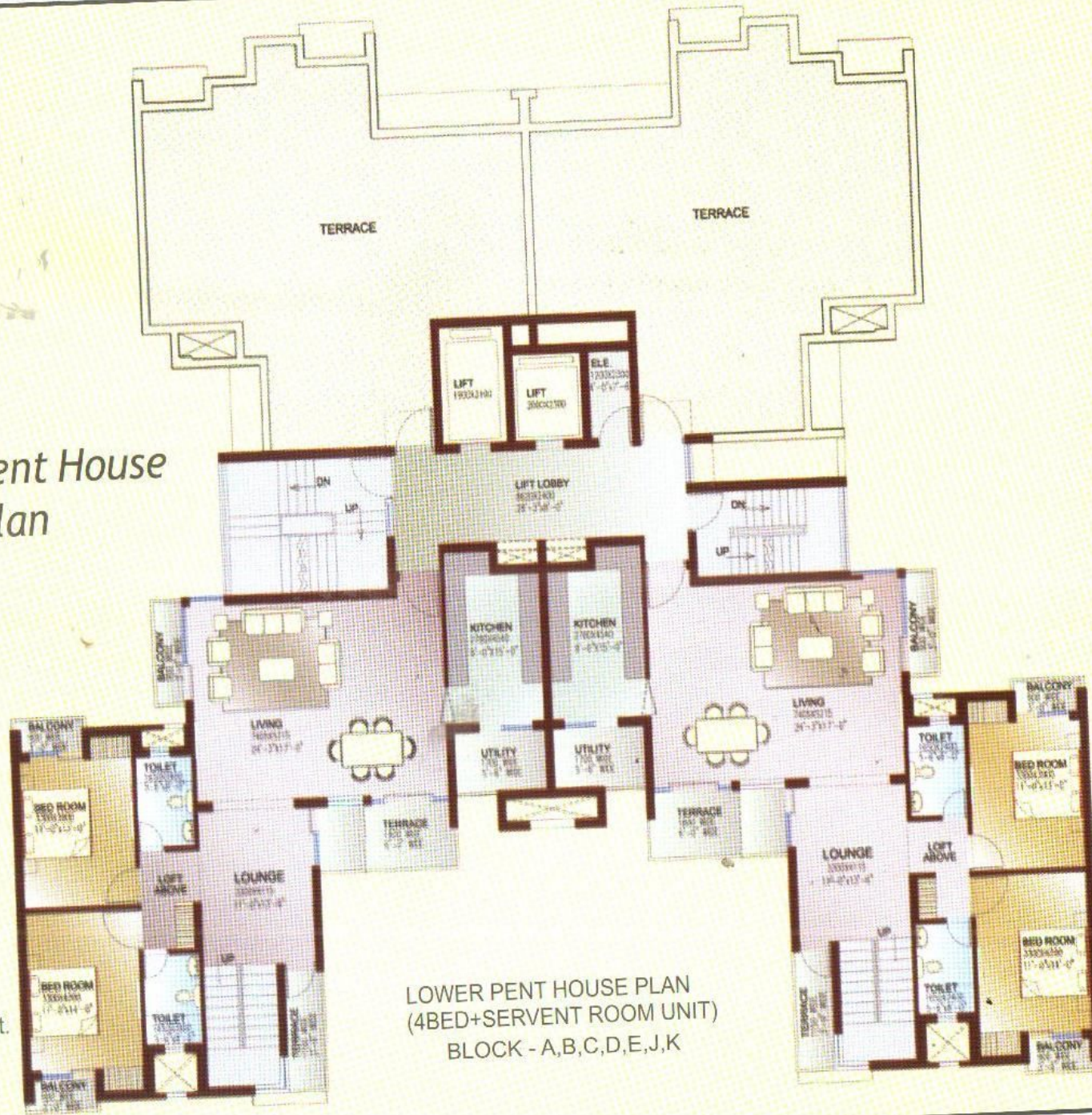
3 Bedrooms+Study
AREA 2015 Sqft.



TYPICAL FLOOR PLAN
(3 BED+STUDY & 2 BED ROOM UNIT)
BLOCK - A,B,C,D,E,J,K

DRG. NO.
03

Lower Pent House Plan



PH-2
AREA 3845 Sqft.

LOWER PENT HOUSE PLAN
(4BED+SERVENT ROOM UNIT)
BLOCK - A,B,C,D,E,J,K

PH-1
AREA 3845 Sqft.

DRG. NO.
04

Upper Pent House Plan



PH-2

PH-1

UPPER PENT HOUSE PLAN
(4BED+SERVENT ROOM UNIT)

DRG. NO.
05



GROUND FLOOR PLAN
(4 BED ROOM UNIT)
BLOCK-L

DRG. NO.
07



TYPE-1
AREA 2175 Sqft.

TYPE-3
AREA 2100 Sqft.

FIRST FLOOR PLAN
(4 BED ROOM UNIT)
BLOCK-L

DRG. NO.
08



TYPE-2
AREA 2175 Sqft.

TYPE-3
AREA 2100 Sqft.

FIRST FLOOR PLAN
(4 BED ROOM UNIT)
BLOCK-M

DRG. NO.
09



TYPICAL FLOOR PLAN
(4 BED ROOM UNIT)
BLOCK- L & M

DRG. NO.
10



PH-2
AREA 4155 Sqft.

PH-1
AREA 4145 Sqft.

LOWER PENT HOUSE
(4 BED ROOM+ SER. UNIT)
BLOCK-L & M

DRG. NO.
11



PH-2

PH-1

UPPER PENT HOUSE
 (4 BED ROOM+SER.UNIT)
 BLOCK- L & M

DRG. NO.
12



PH-2

PH-1

UPPER PENT HOUSE
(4 BED ROOM+SER.UNIT)
BLOCK- L & M

DRG. NO.
12



TYPE-1
AREA 1780 Sqft.

TYPE-3
AREA 1715 Sqft.

GROUND FLOOR PLAN
(3 BED ROOM UNIT)
BLOCK - N & Q

DRG. NO.
13

TYPE-2
AREA 1780 Sqft.



TYPE-3
AREA 1715 Sqft.

GROUND FLOOR PLAN
(3 BED ROOM UNIT)
BLOCK- P & R

DRG. NO.

14

21



TYPE-3
AREA 1755 Sqft.

TYPE-1
AREA 1820 Sqft.

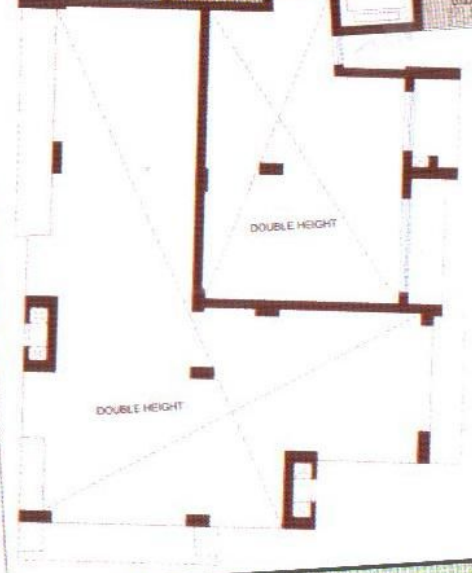
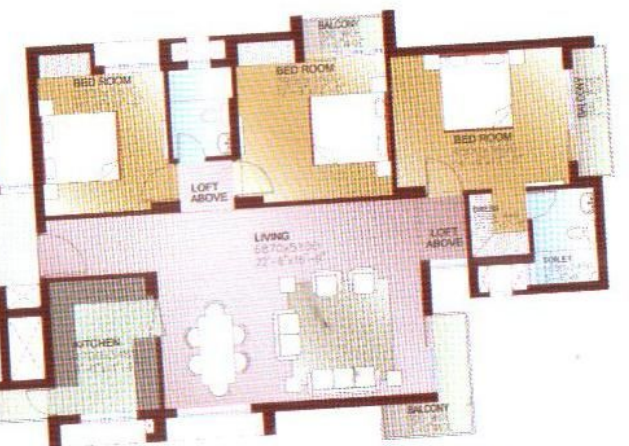
FIRST FLOOR PLAN
(3 BED ROOM UNIT)
BLOCK- N & Q

DRG. NO.
15

TYPE-2
AREA 1820 Sqft.



TYPE-3
AREA 1755 Sqft.



FIRST FLOOR PLAN
(3 BED ROOM UNIT)
BLOCK- P & R

DRG. NO.
16

TYPE-2
AREA 1820 Sqft.



TYPE-1
AREA 1820 Sqft.

TYPE-3
AREA 1755 Sqft.

2nd, 3rd, 4th & 10th FLOOR PLAN
(3 BED ROOM UNIT)
BLOCK- N,P,Q & R

DRG. NO.

18

TYPE-2
AREA 1820 Sqft.



TYPE-1
AREA 1875 Sqft.

TYPE-3
AREA 1755 Sqft.

5th, 6th, 7th & 8th FLOOR PLAN
(3 BED ROOM UNIT)
BLOCK - P & R

DRG. NO.
19



5th, 6th, 7th & 8th FLOOR PLAN
 (3 BED ROOM UNIT)
 BLOCK - N & Q

DRG. NO.
20

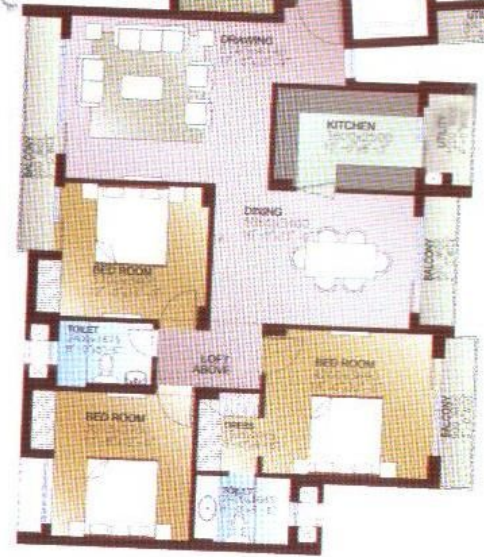
TYPE-2
AREA 1865 Sqft.



TYPE-3
AREA 1755 Sqft.



TYPE-1
AREA 1820 Sqft.



9TH FLOOR PLAN
(3 BED ROOM UNIT)
BLOCK - N & Q

DRG. NO.
21

TYPE-2
AREA 1820 Sqft.



TYPE-3
AREA 1755 Sqft.

TYPE-1
AREA 1865 Sqft.

9th FLOOR PLAN
(3 BED ROOM UNIT)
BLOCK- P & R

DRG. NO.
22

PH2
AREA 3255 Sqft



PH1
AREA 3255 Sqft.

LOWER PENT HOUSE
(3 BED ROOM + SER. UNIT)
BLOCK- N,P, Q & R

DRG. NO.
23



UPPER PENT HOUSE
 (3 BED ROOM + SER. UNIT)
 BLOCK- N,P,Q & R

DRG. NO.
24

SPECIFICATIONS

STRUCTURE	Framed Structure confirming to BIS seismic codes with block masonry filler walls
FLOOR FINISHES	
Living/Dining	Vitrified Tiles / Marble Floor
Bedrooms	Laminated Wooden Flooring / Ceramic Tiles.
Stairs	Stone Flooring on Treads
Balconies	Non-skid Ceramic Tiles
TOILETS	
Flooring	Non-skid Ceramic Tiles / Porcelain Tiles
Walls	Tiles as per architectural design
Chinaware	European Type W/C, Wash hand Basin, Single Lever CP Fittings
Counter	Marble / Granite Counter
Water Supply	Provision for hot and cold water supply
KITCHEN	
Flooring	Non-skid Ceramic Tiles or equivalent
Dado	Ceramic Tiles Cladding on Walls as per Architectural Design
Counter	Granite
Water Supply	Provision for Hot and Cold Water Supply
Fittings	Single Lever CP Fittings with Mixers
Sink	Stainless Sink with Drain Board
JOINERY	
Windows	UPVC / Anodized Aluminium with Float Glass
Doors	Machine made Moulded Door Shutter with S.S. Fittings.
Internal	Drawing and Dining Rooms / Bedrooms walls shall be finished with Plastic Emulsion Paint as per design.
External	Pleasing elevation with Semi-Permanent Finish / All Weather Exterior Paints.
OTHER FEATURES	
Electrical	Copper Wiring in conduits with Modular Switches
Telecommunication	Provision of Telephone Points in Drawing Room, Dining Room and all Bedrooms
	Provision of TV Aerial Points in Drawing Room/Lobby and all Bedrooms

PROMOTERS

Late Shri Tirath Ram Agarwal (Engineer)

In Coal, Brick Kiln and Colonization Business. President of Lucknow Vyapar Mandal and associated with several social and educational institutions. Awarded U.P. Ratan Intellectuals Award in November 1995. Vice President - U.P. Vyapar Mandal, Former Vice-President - All India Brick and Tiles Association, Past President - Oudh Gymkhana Club and Lucknow Club, Past President and Patron U.P. Brick Kiln Owners Association and U.P. Coal Merchant's Association. Former Alderman, Nagar Mahapalika, Lucknow

Er. Sumer Agarwal

After early education from St. Agnes, St. Francis, La Martiniere College, Colvin, did his B.E. from Roorkee and M.S. from Michigan, U.S.A. Awarded Teaching Fellowship, Research Assistantship and International Scholarship at the University of Michigan, Ann Arbor. Dy. Bhawan Leader and Member, Governing Council, University of Roorkee.

Working under the known brand name of Tirath Housing, he established the proprietorship firm M/s Tirath Ram Sumer Kumar which is engaged in construction of multistoried residential and commercial complexes. Mr. Sumer Agarwal is a qualified engineer and is in this line of activity for last two decades. He has gathered adequate exposure of this field. Mr. Sumer Agarwal and is well equipped with the technical aspects of the business. He has a team of qualified manpower managing the business in a professional manner.

A known figure of Lucknow, he is the Founder President of Lucknow Metropolitan Jaycees and Past President of Rotary Club of Lucknow and Roorkee Alumni Association. He is also a Member of M.B. Club, Golf Club and Oudh Gymkhana Club.

Er. Pawan Agarwal

After his schooling from Sainik School, St. Francis College and La Martiniere College, Lucknow did his engineering B. Tech (Mechanical) from Pant Nagar University. He is a Technocrat who established his business under the name of Pee Kay Builders and has the distinction of setting new landmarks year after year. The projects completed by him testify to their entrepreneurship, command and managerial skills. The qualified, technical, financial and management personnel at his command has enabled him to embark upon many new projects of large magnitude. Besides construction activities, he is also involved in manufacturing and entertainment industry for the last several years. He has constructed a number of Commercial and Residential Complexes in Lucknow and Kanpur. He has also constructed S.F.S. House for U.P. Housing Board and Development Board in Lucknow. A known social life of Lucknow, he is a Member of M.B. Club, Oudh Gymkhana Club and Golf Club.

Rahul Agarwal

After his schooling from La Martiniere College, Lucknow, did his graduation in B. Com (Hons) from Shri Ram College of Commerce, New Delhi and Master Programme in International Trade from Symbiosis Institute of Foreign Trade, Pune.

Actively engaged in the business of construction of Residential and Commercial complexes in Lucknow since the last 9 years.

He is also a member of M.B. Club, Oudh Gymkhana Club and Genesis Club.

Rohit Agarwal

After his schooling from La Martiniere College, completed his BBA from Lucknow University and thereafter joined his parental business M/s Pee Kay Builders Pvt. Ltd., a renowned construction house of Lucknow city.

Has been looking after construction work for the last 7 years. Presently engaged in the manufacturing activities of Cap Pipes and Plastics, a leading manufacturer of PVC conduit pipes.

EXISTING PROJECTS



**PRATIBHA TIRATH
APARTMENTS**



**BELL FLOWER
APARTMENTS**



**GULMOHAR
APARTMENTS**



**ANNAPURNA
APARTMENTS**



**TIRATH BAKSHI
APARTMENTS**



**TIRATH VIKAS
APARTMENTS**



**CYBER TOWER
COMMERCIAL**



**UTTAM PALACE
COMMERCIAL**



**ROHIT HOUSE
COMMERCIAL**



**ROHIT BHAWAN
COMMERCIAL**



**RAJARAM KUMAR PLAZA
COMMERCIAL**



**BANSAL COMPLEX
COMMERCIAL**



**SHRI RAM TOWER
COMMERCIAL**

ON GOING PROJECT



THE TERRACES
APARTMENTS
VIKALP KHAND, GOMTI NAGAR

The Terraces

- 2 / 3 / 4 Bedroom Apartments for comfortable and modern living
- Centrally Located
- Excellent Light and Ventilation with road on two sides
- Eco & Vaastu Friendly with entrance from East
- 24 Hours Water / Electricity / Security
- Landscape Garden

UPCOMING PROJECT



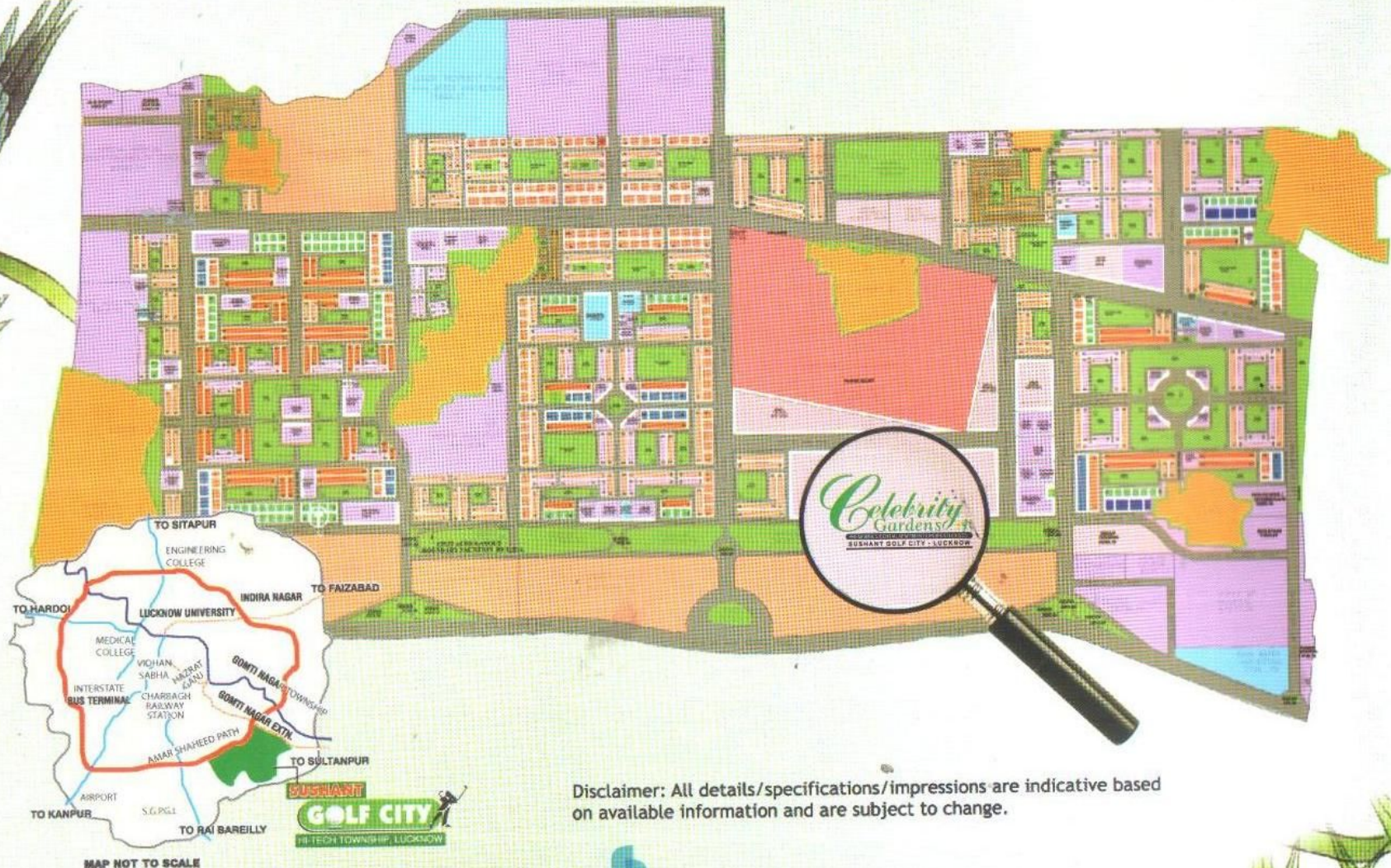
BEST WESTERN PLUS
Levana
HOTELS
HOTEL LEVANA
HOSPITALITY
75, Hazratganj, Lucknow

- Ideal for IT Companies/BPO Enterprises/MNC
- Centrally Located in Vibhuti Khand, Gomti Nagar
- Modern Fire Detection and Suppression Systems
- Ample Dedicated and General Car Parking
- 100 % Power Backup
- Large Efficient Floor Plates
- State of the Art Infrastructure
- Telecommunication Network



CYBER HEIGHTS
COMMERCIAL/OFFICE COMPLEX
VIBHUTI KHAND, GOMTI NAGAR, LUCKNOW

LOCATIONAL ADVANTAGE



Disclaimer: All details/specifications/impressions are indicative based on available information and are subject to change.



Ground, Floor, Raja Ram Kumar Plaza, 75, Hazratganj, Lucknow - 226 001
Ph.: 91-522-3919318/3919319/2615316